

WOLLAR SOLAR

COMMUNITY NEWSLETTER



ACCESS ROAD CONSTRUCTION TO BEGIN

Work is set to start on the next stage of construction on 12 July.

This involves building an access road from Barigan Road to the solar farm site.

The 1.5km road will be used during construction of the solar farm and new substation.

The access road should take around 10 weeks to complete.

From 12 July 10 earthworking machines will be delivered over four days.

Up to 5 of these will require oversize loads.

Material deliveries will come from a quarry in Ulan, managed by a detailed haulage plan which is available on our website.

No more than 26 B-Doubles will be used per day to bring material to site.

This work is scheduled for mid August and journeys will be timed to avoid school bus movements.

ABOUT THE PROJECT

Wollar Solar Farm is a state significant development which was approved by the NSW Minister for Planning and Public Spaces on 24 February 2020. The project will be located approximately 7km south of Wollar Village.

We are keen to keep you informed on what's happening with Wollar Solar Farm.

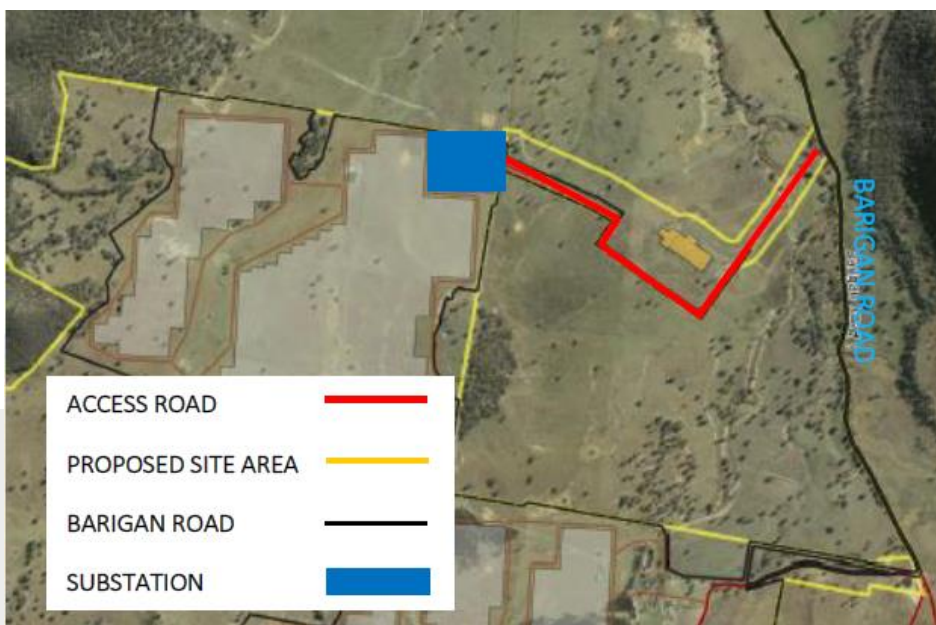
We will issue newsletters regularly as the project continues.

We are also very keen to make use of as much local skill and expertise as possible.

Anyone interested in working on the project can get in touch via the website.

We will keep you informed about opportunities to find out more.

To receive future newsletters via email, please contact us at info@wollarsolarfarm.com.au





TRANSPORT UPDATE

Once work starts, we expect up to 30 extra light vehicles per day to use local roads to reach site.

There will be traffic control measures on Barigan Road to ensure safety while material is brought to site.

To minimise the period of disruption to local road users, we were granted an amendment to our planning approval to allow larger vehicles to be used.

Details, including the B-double route, can be found on the project website.

Working hours will be 7am to 6pm on weekdays and 8am to 1pm on Saturdays.

The contractor for this stage of the project is Mudgee-based A1 Earthworx.



WOLLAR SOLAR FARM

- The project will have a capacity of up to 280MW
- It will comprise around 660,000 solar panels and take between 12 and 18 months to build
- We expect to require a workforce of around 320 people at the busiest times of construction
- The solar farm will connect to the electricity network via an existing overhead power line crossing the site
- The site was chosen as it has excellent solar resource, is close to the transmission network, is easily accessible by road and benefits from flat ground well suited to installing solar panels
- The solar farm will have an estimated working life of up to 30 years, after which all above ground infrastructure can be decommissioned and removed.

JOB OPPORTUNITIES

If you are interested in offering sub-contracting or other services during the project, please register your interest at wollarsolarfarm.com/projects

ENQUIRIES AND COMPLAINTS

Enquiries and complaints can be lodged via the following methods:

Online Form: www.wollarsolarfarm.com.au

Phone: 1800 700 743 Please leave a message and we will return your call.

Email: info@wollarsolarfarm.com.au

Mail: PO Box K1053, Haymarket, NSW, 1240