

WOLLAR SOLAR

COMMUNITY NEWSLETTER



ACCESS ROAD CONSTRUCTION UNDERWAY

Work is now underway on the next stage of construction.

This involves building an access road from Barigan Road to the solar farm site.

The 1.5km road will be used during construction and operation of the solar farm and new substation.

We expect the access road to be complete in early October.

To ensure safety for all road users, there will be traffic lights in place on Barigan Road.

These will be located about 2km down Barigan Road from Wollar and operate between 7am and 5pm Monday to Friday.

Material deliveries will come from a quarry in Ulan, managed by a detailed haulage plan.

No more than 26 B-Doubles will be used per day to bring material to site.

The bulk of this work is expected to start in September and journeys will be timed to avoid school bus movements.

ABOUT THE PROJECT

Wollar Solar Farm is a state significant development which was approved by the NSW Minister for Planning and Public Spaces on 24 February 2020. The project will be located approximately 7km south of Wollar Village.

We are keen to keep you informed on what's happening with Wollar Solar Farm.

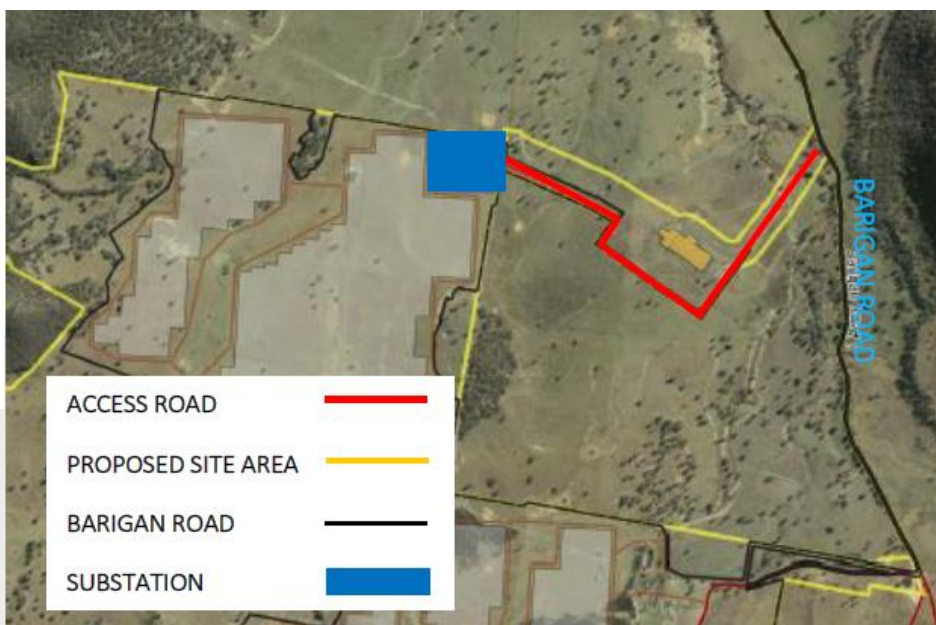
We will issue newsletters regularly as the project continues.

We are also very keen to make use of as much local skill and expertise as possible.

Anyone interested in working on the project can get in touch via the website.

We will keep you informed about opportunities to find out more.

To receive future newsletters via email, please contact us at info@wollarsolarfarm.com.au





PROJECT UPDATE

The contractor for this stage of the project is Mudgee-based A1 Earthworx.

Working hours will be 7am to 6pm on weekdays and 8am to 1pm on Saturdays.

We are close to finalising the appointment of a contractor to build the solar farm itself and hope to announce this soon.

Significant work on the solar farm and substation start after the access road is finished.

In the meantime we are discussing some changes to the development approval with the NSW Government to clarify permitted vehicle movements during construction.

Details will be posted on the project website.



WOLLAR SOLAR FARM

- The project will have a capacity of up to 280MW
- It will comprise around 660,000 solar panels and take between 12 and 18 months to build
- We expect to require a workforce of more than 320 people at the busiest times of construction
- The solar farm will connect to the electricity network via an existing overhead power line crossing the site
- The site was chosen as it has excellent solar resource, is close to the transmission network, is easily accessible by road and benefits from flat ground well suited to installing solar panels
- The solar farm will have an estimated working life of up to 30 years, after which all above ground infrastructure can be decommissioned and removed.

JOB OPPORTUNITIES

If you are interested in offering sub-contracting or other services during the project, please register your interest at wollarsolarfarm.com/projects

CONTACT US

Enquiries and complaints can be lodged via the following methods:

Online Form: www.wollarsolarfarm.com.au

Phone: 1800 700 743 Please leave a message and we will return your call.

Email: info@wollarsolarfarm.com.au

Mail: PO Box K1053, Haymarket, NSW, 1240