

WOLLAR SOLAR

COMMUNITY NEWSLETTER



ACCESS ROAD CONSTRUCTION TO BEGIN

The next stage of construction for Wollar Solar farm will start in May.

This involves construction of an access road from the upgraded Barigan Road to the site of the solar farm.

The road will be used during construction of the solar farm and new substation.

The new road will be around 1.5km and should take two to three months to complete.

The works will be performed by Mudgee-based contractor A1 Earthworx.

Working hours will be limited to 7am to 6pm on weekdays and 8am to 1pm on Saturdays.

Material will be delivered from a quarry in Ulan.

We expect around 26 deliveries per day to bring material to site.

We will keep in touch with our neighbours as this work progresses.

ABOUT THE PROJECT

Wollar Solar Farm is a state significant development which was approved by the NSW Minister for Planning and Public Spaces on 24 February 2020. The project will be located approximately 7km south of Wollar Village.

We are keen to keep you informed on what's happening with Wollar Solar Farm.

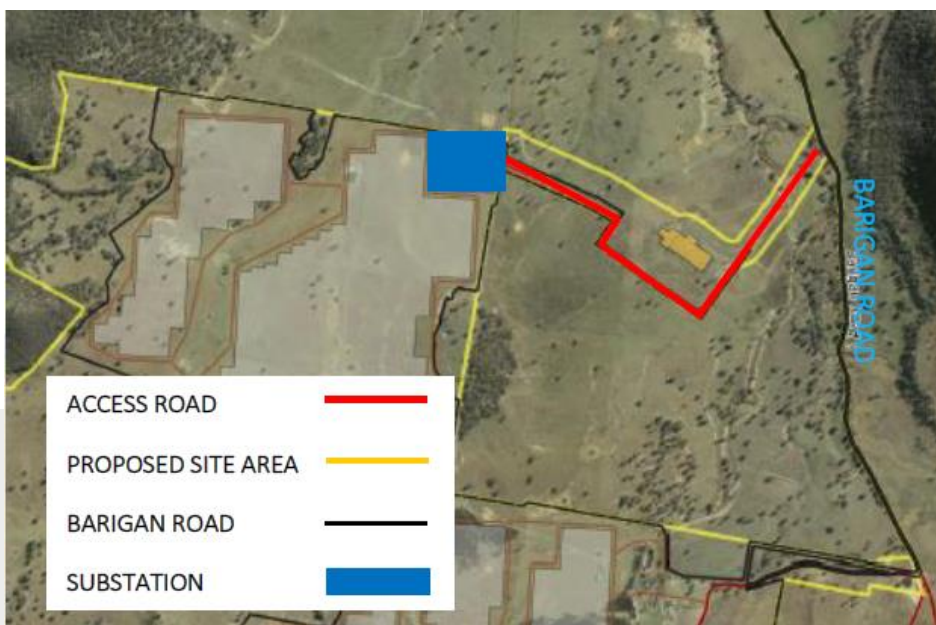
We issue newsletters monthly, or more frequently if there is important news to share.

To receive future newsletters via email, please contact us at info@wollarsolarfarm.com.au

COMMUNITY MEETING

Join us at **Wollar Community Hall at 2pm on Sunday 2 May 2021** for our next community information session.

Meet the team, ask any questions and find out more. All welcome!





A1 EARTHWORX

A1 Earthworx has been selected to build the access road. The company has been operating in Mudgee and the Central West region for 38 years.

A1 Earthworx was chosen due to its experience, local knowledge and commitment to safety.

The image below shows the team in action at a previous project.



WOLLAR SOLAR FARM

- The project will have a capacity of up to 290MW
- It will comprise more than 900,000 solar panels and take between 12 and 18 months to build
- We expect to require a workforce of around 300 people at the busiest times of construction
- The project is expected to generate enough safe, clean, reliable electricity to meet the needs of more than 100,000 NSW homes per year
- The solar farm will connect to the electricity network via an existing overhead power line crossing the site
- The site was chosen as it has excellent solar resource, is close to the transmission network, is easily accessible by road and benefits from flat ground well suited to installing solar panels
- The solar farm will have an estimated working life of up to 30 years, after which all above ground infrastructure can be decommissioned and removed.

JOB OPPORTUNITIES

If you are interested in offering sub-contracting or other services during the project, please register your interest at wollarsolar.com/projects

ENQUIRIES AND COMPLAINTS

Enquiries and complaints can be lodged via the following methods:

Online Form: www.wollarsolarfarm.com.au/contact-us

Phone: 1800 700 743 Please leave a message and we will return your call.

Email: info@wollarsolarfarm.com.au

Mail: PO Box K1053, Haymarket, NSW, 1240