

# WOLLAR SOLAR

COMMUNITY NEWSLETTER



## CONSTRUCTION UPDATE

Wollar Solar Farm is getting ready to start on its next stage of construction. In our last newsletter, we set out the stages. Stage 1, being the upgrades to Barigan Road, are almost complete. Only line marking, street signs and some tidying up remain. We are still finalising the details, but it is likely Stage 2 will start in early May. That will involve building a new access road from Barigan Road across to the land where the solar farm will be located. This road is approximately 1.5km long and will take 2-3 months to construct.

The works will be performed by a Mudgee based contractor. Road base material will be brought in by truck from a quarry in Ulan, in accordance with the project Traffic Management Plan. Working hours will be 7am-6pm on weekdays, 8am-1pm on Saturdays and no work on Sundays or public holidays. We will update on the timeframes for Stage 3 (Substation construction) and Stage 4 (Solar Farm construction) in our next newsletter. If you have any questions or concerns about the works, please contact us using the details at the bottom of the newsletter.

## ABOUT THE PROJECT

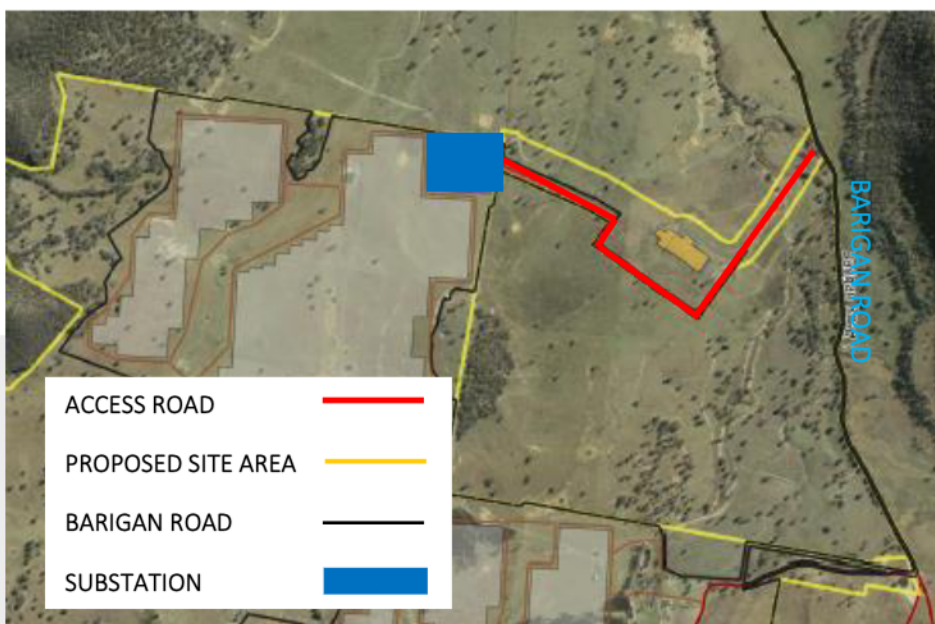
Wollar Solar Farm is a state significant development which was approved by the NSW Minister for Planning and Public Spaces on 24 February 2020. The project will be located approximately 7km south of Wollar Village (55 km north east of Mudgee). The Wollar Solar Farm will have a capacity of up to 290MW and will connect to the electricity network via an existing nearby transmission line.

We are keen to keep you informed on what's happening with Wollar Solar Farm. We issue newsletters monthly, or more frequently if there is important news to share. To receive future newsletters via email, please contact us at [info@wollarsolarfarm.com.au](mailto:info@wollarsolarfarm.com.au)

## NEW CONTACT NUMBER

If you would like to discuss the project, please call us on our new toll free information line.

**1800 700 743**





## DID YOU KNOW?

The Wollar Solar Farm will:

- Take about around 12 to 18 months to construct.
- Create local job and training opportunities.
- Support Commonwealth and NSW climate change commitments.
- Improve electricity reliability, security, and cost.
- Generate enough clean, renewable energy for about 104,926 average NSW homes.
- Displace approximately 515,564 metric tonnes of carbon dioxide.
- Consist of approximately 922,432 PV solar panels of a similar size to residential ones.



Photovoltaic solar panels, similar to those which will be used at Wollar Solar Farm

## JOB OPPORTUNITIES

If you would like to be considered to provide sub-contracting or other services on the project, please submit your information to [tender@wollarsolarfarm.com.au](mailto:tender@wollarsolarfarm.com.au), or leave your details with us on the website at [wollarsolar.com.au/projects](http://wollarsolar.com.au/projects) and we will provide your information to our EPC Contractor, once selected.

## ENQUIRIES AND COMPLAINTS

Enquiries and complaints can be lodged via the following methods:

Online Form: <https://www.wollarsolarfarm.com.au/contact-us/>

Phone: 1800 700 743 Please leave a message and we will return your call.

Email: [info@wollarsolarfarm.com.au](mailto:info@wollarsolarfarm.com.au)

Mail: PO Box K1053, Haymarket, NSW, 1240